



2D/1D Imager  
Barcode Scanner



# DURASCAN® D840

## Thin, Small & Light - 2D/1D Scanner - Great for one-handed solutions

The DuraScan® D840 is a fast-scanning universal barcode scanner with Bluetooth® wireless technology. It reads the most popular 2D/1D barcodes and is perfect for retail point of sale, inventory management, sales order entry, field service, and other mobile business applications. Users can scan barcodes printed on labels or displayed on screens. Designed for mobility, durability and lasting up to two shifts. The external rubberized material increases drop protection. Easy to use and attachable to a mobile device, enabling one-handed operation, it slips neatly into your pocket and fits comfortably in the palm of your hand.



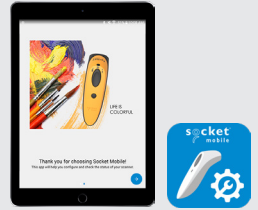
Certified by Apple® for iOS devices (iPad®, iPhone®, iPod Touch® devices) and compatible with Android and Microsoft Windows®

### Features

- **Bluetooth Wireless Technology** - Connects easily to a wide range of Bluetooth enabled smartphones, tablets, notebook and desktop computers [Compatible with iOS, Android and Windows devices with typical Bluetooth range of 10 meters (33 feet).]
- **Certified by Apple® for iOS devices** - Guaranteed Compatibility - With our SDK integrated in over 700+ applications, Socket Mobile scanners are one of the most natively integrated scanners available today. Socket Mobile Scanners are also 100% compatible with any application out-of-the-box in HID (keyboard emulation) mode.
- **Scanning** - Fast 2D/1D, omni-directional scanning for printed or on-screen barcodes with highly visible and safe LED aimer.
- **LED Aimer** - Bright, rectangular illumination field with LED dot for precise aiming.
- **Size & Weight** - Measuring a littler over ½ inch (16.76mm) thick and weighing 2.52 ounces (71.5g)
- **User Feedback** - With audible tones, hand pulsation and Bluetooth indicators
- **Long-Lasting Battery** - Power to last over 16 hours.
- **One-Handed Operation** - Attachable clip sold separately.
- **Durable Casing** - Rubber material for increased protection from drops.
- **Protective Material** - Made with antimicrobial material for protection against potentially harmful bacteria.
- **Application Integration** - Socket Mobile's Capture SDK enables easy integration in your applications to improve business productivity with fast, efficient and reliable data transfer over Bluetooth wireless technology.
- **Accessories** - Klip, Charging Dock, Adapter and Multi-Charger (sold separately or in a bundle)
- **Designed and Assembled in the USA**
- **Developer Support Available**
- **1-Year Warranty**



- (1) DuraScan D840, Universal Barcode Scanner
- (1) Wrist Strap



Socket Mobile Companion App  
Download for Free!

Note: Charger NOT included - select the charging option that works best for you.

## OPTIONAL ACCESSORIES

DuraScan® D800, Linear Barcode Scanner, & DuraCase & Charging Dock\*\*



DuraCase Charging Adapter\*



DuraScan® D800, Linear Barcode Scanner, & DuraCase & Charging Dock\*\*



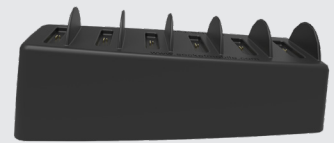
DuraCase Charging Dock\*



Holster



DuraCase 6 Multi-Bay Charger\*



\*Charging options - The Charging Adapter is sold separately.

- \*\* Charging Bundles - CX 3557-2186 Charging Dock with D840
- CX 3551-2199 Multi-Bay Charger with six D840 scanners

**Default Barcode Symbologies:**

**1D Symbologies:** Codabar, Code 39, Code 93, Code 128, EAN-13/JAN, EAN-8/JAN, GS1 Databar, GS1 Databar Expanded, GS1 Databar Limited, GS1-128, Interleaved 2 of 5, ISBT 128, UPC A, UPC EO

**2D Symbologies:** Aztec, Data Matrix, Maxicode, Micro PDF417, PDF417

**Supported Barcode Symbologies:**

**1D Symbologies:** Bookland EAN, Chinese 2 of 5, Codabar, Code 11, Code 39, Code 93, Code 128, Composite CC-A/B, Composite CC-C, Composite TLC, Discrete 2 of 5, EAN-13/JAN, EAN-8/JAN, GS1 Databar, GS1 Databar Expanded, GS1 Databar Limited, GS1-128, Interleaved 2 of 5, ISBT 128, ISSN EAN, Matrix 2 of 5, MSI, UPC/EAN/JAN, UPC A, UPC EO

**2D Symbologies:** Aztec, Data Matrix, Han Xin, Maxicode, Micro PDF417, MicroQR, PDF417, QR Code

**Scan Angle:**

42° (Horizontal) - 28° (Vertical)

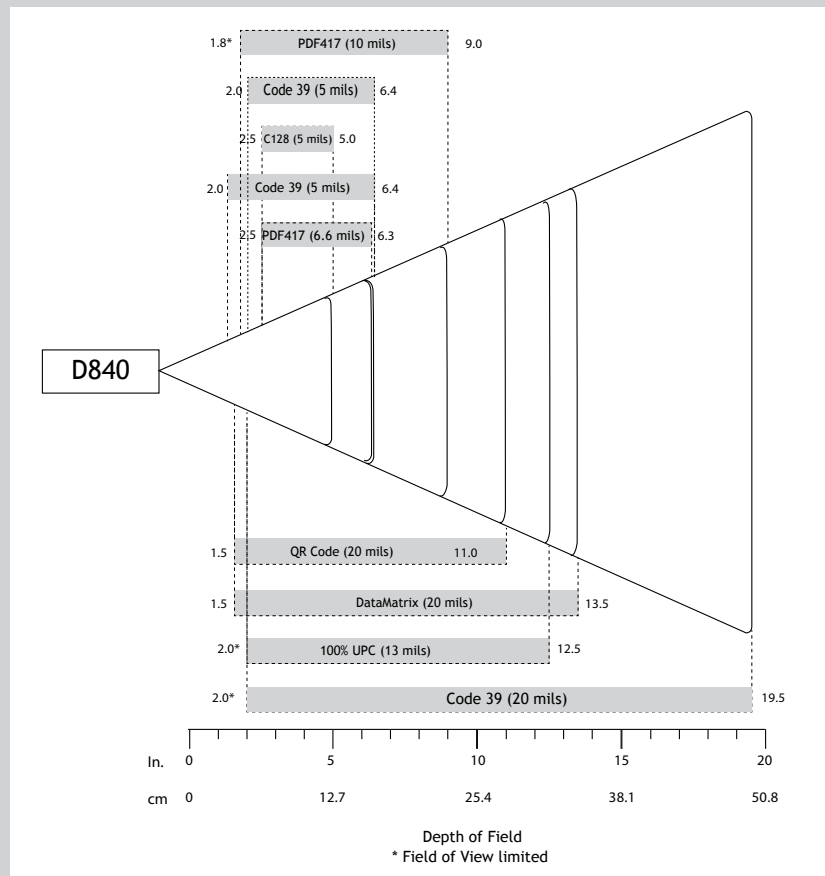
**Sensor Resolution:**

640 horizontal x 400 vertical pixels

**Print Contrast:**

Down to 25%

**Reading Distance:**



3.8 to 49.5 cm (1.5 to 19.5 in.) Depends on barcode size, symbology, label media,

**Decode Ranges:**

	Near	Far
5 mil Code 39	2.0 in/5.1 cm	6.4 in/16.2 cm
5 mil Code 128	2.5 in/6.3 cm	5.0 in/12.7 cm
6.6 mil PDF417	2.5 in/6.3 cm	6.3 in/16.0 cm
10 mil PDF417	1.8 in/4.5 cm*	9.0 in/22.8 cm
13 mil 100% UPC	2.0 in/5.0 cm*	12.5 in/31.7 cm
20 mil Code 29	2.0 in/5.0 cm*	19.5 in/49.5 cm
20 mil Data Matrix	1.5 in/3.8 cm	13.5 in/34.3 cm
20 mil QR Code	1.5 in/3.8 cm	11.0 in/27.9 cm

Technology:	2D/1D Barcode Linear Imager
Lightsource:	1 hyper red 660 nm (nanometer) LED
Aimer:	610 nm LED

## BATTERY

Battery:	Lithium ion rechargeable battery
Charge Time:	8 Hours
Battery Life: Per Full Charge:	<b>Standby time:</b> 25 hours <b>Active Scan Time:</b> 34,000 scans within 3 hours (based on 2 scans every 1 second) 9,000 scans within 10 hours (based on 1 scan every 4 seconds)
Note:	Battery life varies depending on ambient temperature, ambient light, age of battery, etc.

BLUETOOTH (WIRELESS CONNECTION) 

Bluetooth Radio:	Class 2 Bluetooth, version 2.1 + EDR (Enhanced Data Rates) with 56-bit data encryption
Bluetooth Range:	Up to 10 m (33 ft.) depending on environment, range limit is usually due to the Host Device (phone, tablet or notebook)
Bluetooth Profiles:	Basic Mode - Human Interface Device (HID)*, Application Mode - Serial Port Profile (SPP) and Application Mode - MFi-SPP. Some Operating Systems or smartphone/tablet models may support only one profile. <i>*By default, the scanner is set to Basic Mode (HID).</i>

## USER ENVIRONMENT

Ambient Light:	From 0 to 100,000 lux From pitch black to direct sun light
Operating Temperature:	+32 to +122 °F (0 to +50 °C)
Storage Temperature:	-22 to +158 °F (-30 to +70 °C)
Relative Humidity:	5% to 95% (non condensing)
Sealing:	IP40
Drop Specifications:	

## OPERATING SYSTEM COMPATIBILITY

Android OS: Basic Mode (HID)* & Application Mode (SPP)	Mac OS: Basic Mode (HID)* only
Apple iOS: Basic Mode (HID)* & Application Mode (MFi-SPP)	Windows: 10, 8, and 7: Basic Mode (HID)* & Application Mode (SPP)
<i>*By default the scanner is in Basic Mode (HID).</i>	


Certified by Apple® for iOS devices (iPad®, iPhone®, iPod Touch®) and compatible with Android and Windows®.

iOS



OS X



Bluetooth SIG:	Declaration ID: D030473 QDID: 82009
Electrical Safety:	Certified to IEC 60950-1, UL 60950-1, CAN/CSA C22.2
Environmental:	RoHS EN 50581
EMI / RFI:	FCC Part 15 Class C, RSS 210, iCES 003, C-Tick, CISPR 22, CE EN55022, EN55024, TELEC
LED Safety:	IEC/EN 62471 (Exempt Group) FCC ID: T9J-RN42 CMIIT ID: 6514A-RN42 Telec ID:  201-125709



## WARRANTY

Scanner:	Standard one year limited warranty
Accessories:	90 days
Extended Warranty: (sold separately)	<a href="http://www.socketmobile.com/socketcare">www.socketmobile.com/socketcare</a>



## COMMON USES

Retail	Hospitality	Point of Sale
Logistics	Life Sciences	Automotive
Healthcare	Inventory	Transportation
Warehouse Management	Field Sales & Service	Commercial Services

socketmobile.com

Toll-Free: +1 800 552 3300 (USA/Canada)

France: +33 970 462 241

Latin America: +1 510 933 3153

sales@socketmobile.com

Asia Pacific: +1 510 933 3122

Germany: +41 62 834 07 80

Switzerland: +41 62 834 07 80

EMEA & Russia: +41 62 834 0780

Japan: +8190 9808 0518

UK/Ireland/South Africa: +44 (0) 1252 761403  
+44 7787 112109