

T3 PLUS mobile and portable



The T3 Plus tablet is designed with mobility and portability in mind. The T3 Plus provides easy mobility with its built-in WiFi and Bluetooth. Its portable design allows it to either sit on a counter or to be wallmounted. Powered by either Android or Windows 10, the T3 Plus will offer the right solution.



Operator Facing



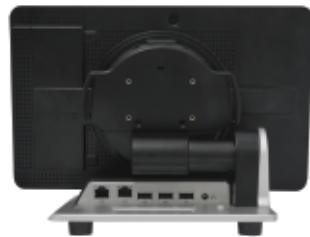
Customer Facing

Display

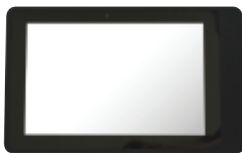
10.1", 1280x800 IPS
Multitouch



Wallmount



Ports



Mobile



Technology

System

Intel Quad Core 1.44GHz, up to 1.92GHz
4GB memory
64GB storage
Android or Windows 10

Connectivities

Cameras, 2M
WiFi ac
Bluetooth 4.0
1x USB
Desktop Base: 3x USB, Serial, Ethernet

Add-ons

Magnetic Stripe Reader
Smart Card Reader (EMV)
Fingerprint Reader
RFID (NFC) Reader
iButton Reader
2D Barcode Imager
7" secondary LCD
Handstrap

Mounting options

Desktop Base, with 3x USB, Serial, Ethernet
Wallmount kit

Power

110-220V, 5V, 5A
Built-in battery, 7000mAH

All trademarks belong to their respective companies. Specifications subject to change without notice.