

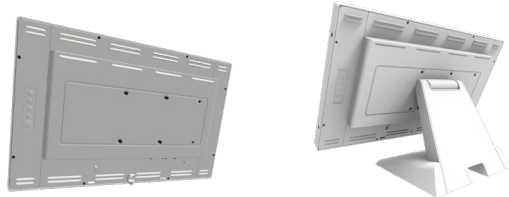
DT-215P-M1

21.5" PCAP Medical-Grade Touch Monitor



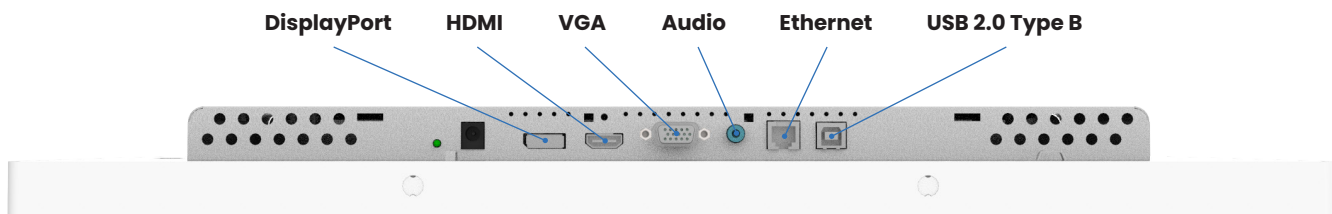
Description

The DT-215P-M1 is a 21.5" wide format medical-grade monitor perfect for a wide range of healthcare applications including, nurses' stations, equipment/devices, laboratory instruments, medical carts, and advertising. This unique, 10-point touch monitor is specifically designed to enhance your medical space and end-user experience while maintaining a durable, compliant, and versatile product enabled by IP54 rated screens and IEC-60601-1-2 4th edition EMC compliance. Naturally intuitive, engineered performance, and designed for medical, this monitor combines a commonality of medical market requirements and consumer-grade touch experience into one solution.



Featured Specifications

- Size: 21.5" TFT LCD
- Maximum Resolution: 1920 x 1084
- Contrast Ratio: 1000:1
- Aspect Ratio: 16:9
- Brightness: 350 nits (No Touch), 297 nits (P-CAP)
- View Angle: H: 178°, V: 178°
- Video Port: 1 x VGA, 1 x HDMI, 1 x DP
- Warranty: 3 year



Specifications

Touch LCD Display

Touch Screen	Projected Capacitive
Touch Points	10
Touch Screen Interface	USB-HID (Type B)
Screen Treatment	Anti-Glare

I/O Ports

Serial Port	1 x RJ11 (for remote key)
USB Port	1 x USB 2.0 (Type B) for Touch Interface (USB-HID)
Video Port	1 x VGA, 1 x HDMI, 1 x DP
Audio Port	–
Power Input	1 x 2.1 mm 12V DC Jack

Color Calibration

Color Temperature	5500K / 6500K / 7500K / 9300K / User Definition
Gamma Selection	Native / Gamma 1.8 / Gamma 2.2 / Dicom
Gamma LUT (bits)	10
Scaling Mode	Full / 5:4 / 4:3 / 16:9 / 1:1

Physical Properties

Power Supply	Medical External Power Adaptor 60W
Speaker	–
Housing Color	White
Construction	Glass, SECC Metal, Plastic (ABS)
Compliance	Front Panel IP54
Dimensions (W x H x D) mm	517.4 x 351.7 x 219.0
Net Weight (kg)	7.8
Gross Weight (kg)	10.8
Carton (W x H x D) mm	615.0 x 450.0 x 330.0
VESA	100 x 100 mm
Ball Drop	IK07

Safety

Certifications	CE, CB, FCC, UL, CCC, RoHS, IEC-60601-1-2 4 th edition EMC compliant
----------------	---

Environment

Operating Temperature	0° C ~ 40° C, 20% ~ 80% RH. Non-Condensing
Storage Temperature	-20° C ~ 60° C, 20% ~ 90% RH. Non-Condensing

Optional Peripheral

N/A

