

8

7

6

5

4

3

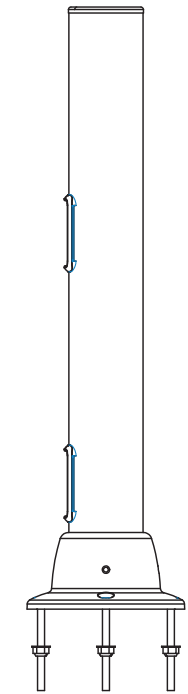
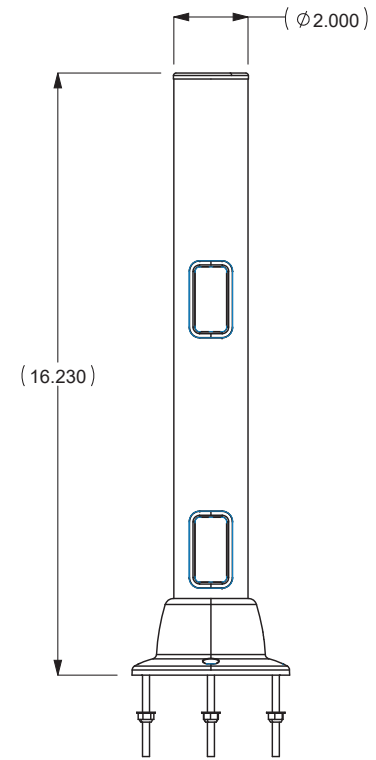
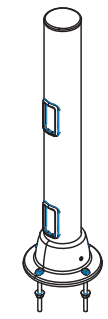
2

1

REVISIONS				
ZONE	REV.	DESCRIPTION	DATE	APPROVED
	A	INITIAL RELEASE	04-01-16	BSH

NOTES:

- 1. MATERIAL CAN BE OBTAINED FROM THE FOLLOWING:
 Engineered Network Systems (ENS) (www.wns-co.com)
 (Ph.: 1-952-767-1005).
 PART NUMBER: 367-4005-10 (REVISION A).



OPERATION	PLACES IN DIMENSION		
	0.0	0.00	0.000
MACHINING METAL	±0.030	±0.010	±0.005
LASER / TURRET	±0.060	±0.030	±0.015
SHEET METAL FORMING	±0.100	±0.040	±0.020
WELDING METAL	±0.125	±0.060	±0.030
MACHINING PLASTIC	±0.100	±0.030	±0.010
FORMING PLASTIC	±0.125	±0.060	±0.020
WOOD	±0.125	±0.040	±0.020
EXTRUSION	±0.040	±0.020	±0.010
ANGULAR		1°	

TITLE: ACCESSORY, ELECTRONICS EQUIPMENT MOUNTING POLE

MATERIAL: STEEL (AS PURCHASED)

FINISH: BLACK (AS PURCHASED)

DRAWN BY: BSH	DATE: 04-01-16	SCALE: 1:4	DRAWING NO.:	REV.:	THIRD ANGLE PROJECTION IN [mm]
CHECK BY: XXX	DATE: 00-00-00	SHEET: 1 of 1	1000603	A	

RELEASED

8

7

6

5

4

3

2

1