

## SCANNER A6

### A6 document and check color Scanner

High speed digital scanning module for fast document reading and data management systems. Main applications: Document reading for lottery and betting systems, banking and postal documents, medical prescriptions, for info kiosk applications as well as indoor and outdoor self service kiosks.



#### CHARACTERISTICS

- Front and rear scanning
- Paper width 108 mm (scanning area 108 mm)
- 200-300dpi resolution double side
- Color (RGB) - Greyscale - Black and White
- Scanner max speed: 400 mm/sec (at 300dpi)
- Anti-jam encoder in insertion
- Fully inspectionable for easy cleaning and maintenance
- Retract or eject
- Microholes checks reading
- USB 2.0 interface
- Front paper mouth with RGB led

## ACCESSORIES

### OPTIONAL:

- CMC7 reading
- UV scanner (for anti-fraud system)
- Interception system of double or overlapping sheets with ultrasonic sensor

## TECHNICAL SHEET

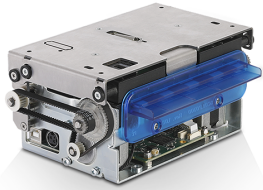
### GENERALS

Sensors	SCANNER A6: Paper input and output presence, paper holding, cover open, upper and lower CIS SCANNER A6 MSR: Paper input and output presence, paper holding, cover open, upper and lower CIS, MICR reader SCANNER A6 MSR US: Paper input and output presence, paper holding, cover open, upper and lower CIS, MICR reader, ultrasonic sheet overlap detection
Drivers	Windows 7, 8, 8.1, 10 (32/64 bit)
Libraries	CuDoubleSidedScannerAPI DLL for .NET CuDoubleSidedScannerAPI DLL for C++
Interfaces	USB port 480 Mbit/s (USB 2.0)
Memories	RAM memory: 32 MB Flash memory: 2 MB

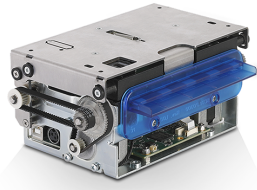
### SCANNER

Scanner type	Contact Image Sensor (CIS)
Resolution	100 dpi, 150 dpi, 200 dpi, 300 dpi
Light source	Colors LEDs: Red (636 nm), Green (525 nm), Blue (460 nm)
Scanning side and insertion direction	Two-sided
Scan modality	Black and White, 8 bits greyscale, 24 bits colours
Max. scan speed	400 mm/s (300 dpi B/W)
Min. scan length	70 mm
Max. scan length	3000 mm
Max. scan width	108 mm
Image format	.bmp, .tif, .raw
Paper width	max. 108 mm
Paper weight	from 50 g/m <sup>2</sup> to 200 g/m <sup>2</sup>
Power supply	from 24 Vdc ±10% (optional external power supply)
Medium consumption	0.4 A
Operating temperature	from 0 °C to +50 °C
Dimensions	115 (L) x 76.1 (H) x 166.5 (W) mm, with cover closed 152.5 (L) x 137.5 (H) x 166.5 (W) mm, with cover open
Weight	1 Kg

## MODELS



**993LV010300200**  
SCANNER A6 FRONT REAR USB  
MSR



**993LV010100200**  
SCANNER A6 FRONT REAR USB



**993LV010500200**  
SCANNER A6 FRONT REAR MSR  
ULTRASONIC

---

CUSTOM SPA - Via Berettine, 2 - 43010 Fontevivo PR - VAT: IT02498250345 - TEL: +39 0521 680111 - FAX: +39 0521 610701 - UNIQUE CODE: T180W10

The technical data on this website are not binding and may be changed without advanced notice.

Last update: 22 September 2020