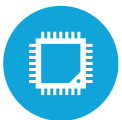




HIGHLIGHTS



Intel® Celeron® Quad Processor J1900



Fanless and Ventless



Two “Flavors” With Varying Port Options



Small Form Factor



Low Power Consumption

SPECIFICATIONS

Saturn DV PC 2 GIG RAM

MOTHERBOARD

Processor: Intel® Celeron® Quad Core J1900 up to 2.42 Ghz
System Memory: 1x DDR3L so-DIMM up to 8GB, 1066 Mhz
Graphic Memory: Intel HD Graphics DX11
Cache: 2MB
Cooling Type: Fanless
Vent Holes: No, Sealed Design
32/64 Bit Support: 32 and 64 bit OS Support

STORAGE

Hard Drive: 2.5" SATA HDD
Or
Solid State Drive: SATA SSD (Optional)

EXPANSION

Mini-PCI express slot: 1 (for wireless LAN or 2nd LAN)

REAR I/O PORTS

USB: 4 x USB 2.0, 1 x USB 3.0
Serial Ports: 3 x RJ45 RS-232 (power option via jumper)
Parallel Port: N/A
Display Port: N/A
PS/2 Keyboard Port: 1 (Optional)
Network: Gigabit LAN (Optional Second Gigabit LAN)
Audio Out: 1 (Optional)
2nd VGA: N/A
Cash Drawer Port: 1
DC Jack: Lock-in 4 PIN, 19V
Wireless Antenna: 1 (Optional)

TECHNICAL SPECS

Dimensions: (8.7" x 5.4" x 1.4") 222 x 138 x 36.8mm
Weight: 2.6 LBS (1.2 Kg)
Mounting Options: 100mm x 100mm VESA or flexible mounting support

OS SUPPORTED

Windows 7, POS Ready 7, Windows 8.1 Embedded Industry Retail,
Windows 8.1 (64 bit), Windows 10 IOT (64 bit), Windows 10 Pro (64 bit)



Saturn DV PC 4 GIG RAM

MOTHERBOARD

Processor: Intel® Celeron® Quad Core J1900 up to 2.42 Ghz
System Memory: 1x DDR3L so-DIMM up to 8GB, 1066 Mhz
Graphic Memory: Intel HD Graphics DX11
Cache: 2MB
Cooling Type: Fanless
Vent Holes: No, Sealed Design
32/64 Bit Support: 32 and 64 bit OS Support

STORAGE

Hard Drive: 2.5" SATA HDD
Or
Solid State Drive: SATA SSD (Optional)

EXPANSION

Mini-PCI express slot: 1 (for wireless LAN or 2nd LAN)

REAR I/O PORTS

USB: 4 x USB 2.0, 1 x USB 3.0
Serial Ports: 3 x RJ45 RS-232 (power option via jumper)
Parallel Port: 1
Display Port: 1
PS/2 Keyboard Port: 1 (Optional)
Network: Gigabit LAN (Optional Second Gigabit LAN)
Audio Out: 1 (Optional)
2nd VGA: 1 (Optional Display Port to VGA Adapter)
Cash Drawer Port: 1
DC Jack: Lock-in 4 PIN, 19V
Wireless Antenna: 1 (Optional)

TECHNICAL SPECS

Dimensions: (8.7" x 5.4" x 1.4") 222 x 138 x 36.8mm
Weight: 2.6 LBS (1.2 Kg)
Mounting Options: 100mm x 100mm VESA or flexible mounting support

OS SUPPORTED

Windows 7, POS Ready 7, Windows 8.1 Embedded Industry Retail,
Windows 8.1 (64 bit), Windows 10 IOT (64 bit), Windows 10 Pro (64 bit)

KEY FEATURES

1	Small Form Factor
2	5 USB Ports
3	2 Serial Ports
4	Fanless and Ventless