

Industrial Touch Screen Monitors

 |  |  | **RoHS**

Industrial Touch Screen Monitors

USER INSTRUCTIONS

- The installation and operation
- Interface details
- Specifications
- Maintenance
- Troubleshooting

 |  |  | **RoHS**

Dear User:

Thank you for purchasing the Industrial monitors!

In order to let you know how to use this product quickly, we have written this manual for you.

From which you can get features of the Industrial monitors, important notice, installation methods, how to maintain and maintain knowledges, we recommend to read this manual carefully before you use this product, which will help you to better use this product.

We will do our best efforts to ensure that the information provided in this manual is accurate and reliable. If any omission, please correct me. The company may improve the product's overall performance and reliability, there may be some improvements and upgrades to the hardware of the product, any changes in the product specification mentioned in this manual or related information are subject to change without notice. Please understand!

Thank you for your cooperation!

- In order to use the Industrial monitors correctly, please keep this manual for reference.

- Please do not open the device by the agency or person who not authorized by our company!

- The Industrial monitors required professional maintenance. If there is any damage, please contact our company in time.

- We reserve the right to modify the specifications or related information mentioned in the use of this manual.

Important Notice

01. Do not place the monitor on the unstable place.
02. Do not exposed the monitor directly in the sunlight and other heat sources.
03. please unplug the power cable when thunderstorm weather with lightning occurred.
04. Do not step on the power cord or make the power cord entwined.
05. Do not make the external wall socket overload
06. Cleaning the monitor with dry soft fabric (volatile matter not allowed)
07. Do not contact with or be exposed to inappropriate temperatures, solvents, acid, water or moisture.
08. Avoid the fragmentation, corrosion and any other damage to products or components (such as shell, LCD/LED panel, port, circuits etc.) caused by insect and mouse or any other things inserting.
09. Please don't install, repair, add or alter the products by the unauthorized agency or person.
10. Please place it in a suitable location, such as mounted on the wall, hanging from the ceiling, and install it under the guidance of the professional.
11. Uriplug the power cable if the monitor is not used for a long time
12. Do not place the monitor on cushion; there is dangerous high voltage inside the monitor; please don't install accessories which are not designed specially for this monitor.
13. Before you power the device, make sure the power voltage meets the device requirements.

Disclaimer

From the date of purchase, our company provides a one-year free warranty for the purchaser. However, the products repaired by unauthorised maintenance person will not provide quality assurance. There is a disclaimer about incorrect use, disaster, and incorrect installation. If our products fail, we will provide free repair or replacement during the warranty period. If warranty has expired, we will charge the cost of materials and artificial services as appropriate. Please contact the relevant sales staff for details.

Transport and Packing List

In order to ensure the product intact, please check and accept the carrier face-to-face when you received the goods. If there is transport damage, please do not sign for it. Please pay attention to hold the goods, packing materials and accessories intact, and get in touch with our company immediately. If the demand side has no objection of the product within the received date, it will be regarded as pass the acceptance check, and we will not assume the responsibility for damaged goods. (Unless otherwise agreed contract) please check that all the following accessories are intact and good besides the monitor after opening the package box.

Power Adapter	Power Cable	Touch Cable
VGA Cable	Mounting Accessories	Warranty Card and User Manual

CATALOG

1	Overview	04
2	Basic Parameter	05
3	Interface Details	06
4	Operation Guide	06
5	OSD option/Adjustment	07
6	Installation	08
7	Maintenance	09
8	Common Troubleshooting of Touch Screen	10

1 Overview

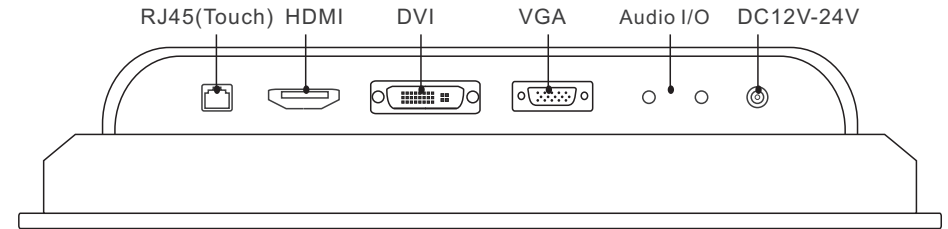
Industrial monitor is a kind of LED industrial panel monitor which are designed for industry application, can be embedded or wall-mounted, with metal cold-roll steel sheets shell, hard configuration and can be installed or install the touch screen more conveniently. Low radiation, high quality, long working life and line by line scanning without waver frames are the features. It can be widely used in many industrial fields, such as military, telecom, power, traffic, railway, communication, finance, internet, medical treatment, security system, industrial auto equipment etc.

01. All-metal shielding structure and industrially designing effectively prevent external electromagnetic interference and radiation. The unique heat dissipation designing ensures the machine run for 24*365 hrs.
02. Professional A class industrial LCD panel with LED backlight and working life can be 50000 hours, the drive board with high quality industrial grade electronic components, professional anti-corrosion paint protection and circuit design, has high compatibility of EMC electromagnetism and stable and reliable performance, completely meet the requirements of 7/24 working in industrial fields.
03. More than 48 hours aging test before delivery, strictly selecting and inspecting, ensure stable and reliable quality, comply with industrial usage.
04. Aluminum alloy shell, IP65 grade water-proof, dust-proof for front panel
05. The product inside designing with snap joint supports VASE desktop base, brackets, snapping, hanging vertically and wall mount installation.
06. The product supports standard VGA, DVI, HDMI interface, brilliant color display screen, high contrast and brightness, wide viewing angle, with OSD menu to switch brightness, contrast, signal mode.
07. Standard VGA + HDMI + DVI automatic identification signal channel
08. DC power port (anti-shedding) and the DC cable optional
09. Taiwan made CE-Touch 5-wire resistive touch screen, with high transmittance and touch sensitivity, supports 12 points calibration. (Option for infrared, capacitive touch screen)
10. Anti-static level of contact 4KV(customized MAX 8KV), air 8KV(customized MAX 16KV)
11. Our product are widely used in electrical devices, communication equipment, instrument, industrial automation, industrial site monitoring, machinery, medical equipment, petrochemical engineering, mechanical manufacturing, etc.

2 Basic Parameter

Panel type	HD industrial TFT LCD
Screen type	LED ; Backlight lifetime \geq 50000h
Luminance	400cd/m2 (customized >400 cd/m2)
Display color	16.7M
Point distance	0.264mm
Viewing angle	160°/160° (customized 178°)
Response time	\leq 5ms
Installation	embedded,wall-mounted,rack-mounted,desktop,cantilever
Menu Languages	English, German, French, Korean, Spanish, Chinese(Simplified/Traditional), Portuguese Supported
Touch Types	Non touch/Resistive touch/Infrared touch/Capacitive touch
Material	Metal /Aluminum Alloy (Black/White/Silver)
Signal port	VGA、HDMI、DVI
Power port	DC12V-24V
Audio port	Audio I/O
Touch port	Rj45 (customized USB、COM)
Anti-interference	Electromagnetic Compatibility; Electromagnetic Interference
Anti-Vibration	5-19HZ/1.0mm Amplitude; 19-200HZ/1.0g Accelerated Speed
Ambient Temperature	Operating Temperature -20°-70° Storage Temperature: -40°-85°
Anti-static	4KV-8KV; (customized MAX 16KV)
Rated Voltage	AC100V~240V to DC12V-24V
Rated Frequency	50Hz/60Hz
Rated Current	\leq 4.0A
Power	\leq 48W

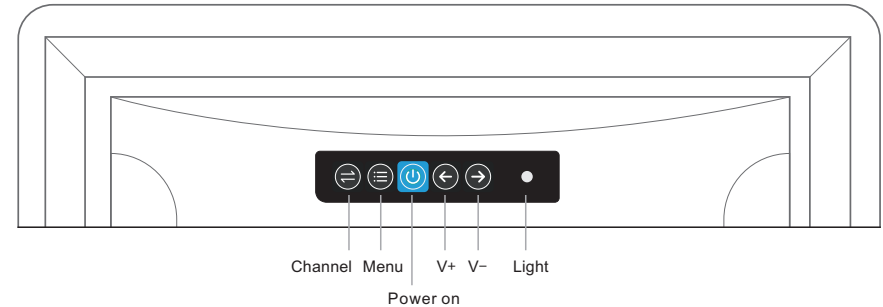
3 Interface Details



Customized Interface: RJF RAD interface, BNC, etc.
The Monitor will recognize and select the signal automatically

4 Operation Guide

My company's monitor back cover button panel:

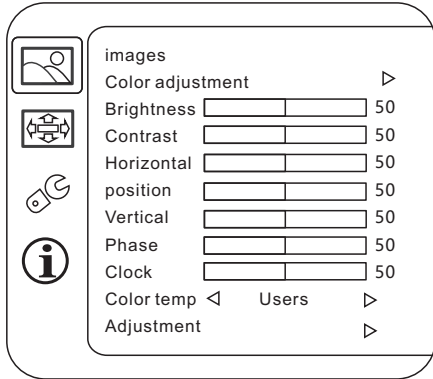


Operating method

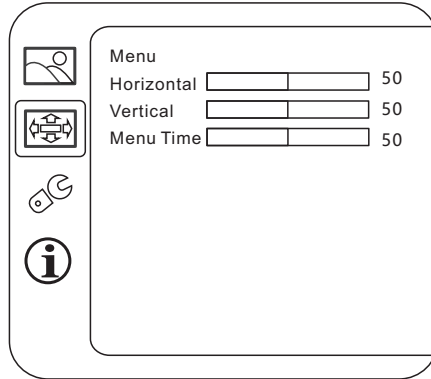
Symbol	Name	Using instruction
Left	Choose -	Choosing different submenus, the function of this button is the change of data quantity
Up	Choose+	
ON/OFF	On / off button	Start up/Shut down the monitor.
Return	back button	Return to the up level menu.
Menu	Main menu	First time you press this button will pop-up OSD

5 OSD option/Adjustment

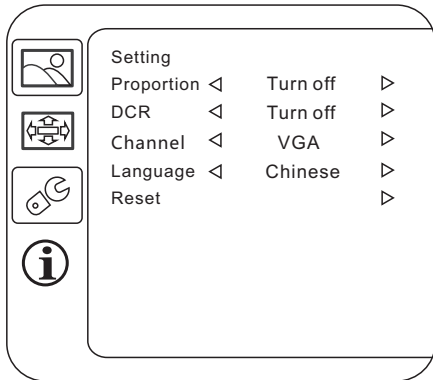
OSD menu's basic functions: Screen display effect adjustment Automation. Brightness adjustment, Contrast ratio adjustment, Color adjustment...etc. If need to enter OSD Menu interface, can go into trial testing of below parameters by clicking main "MENU" option



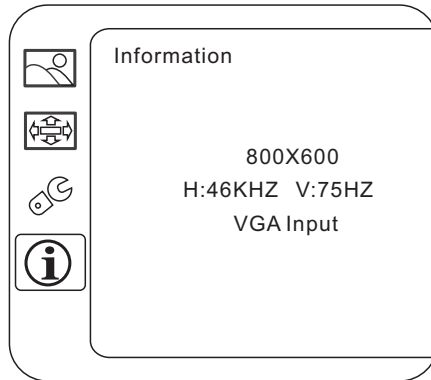
(Image adjustment)



(Menu adjustment)



(Setting adjustment)



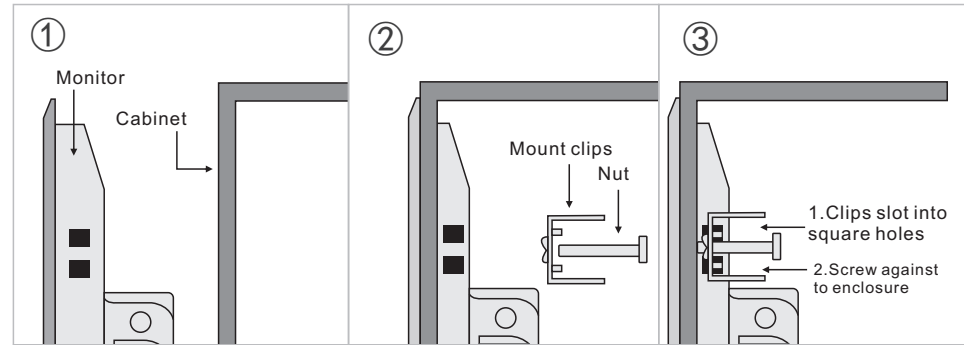
(Information menu)

6 Installation

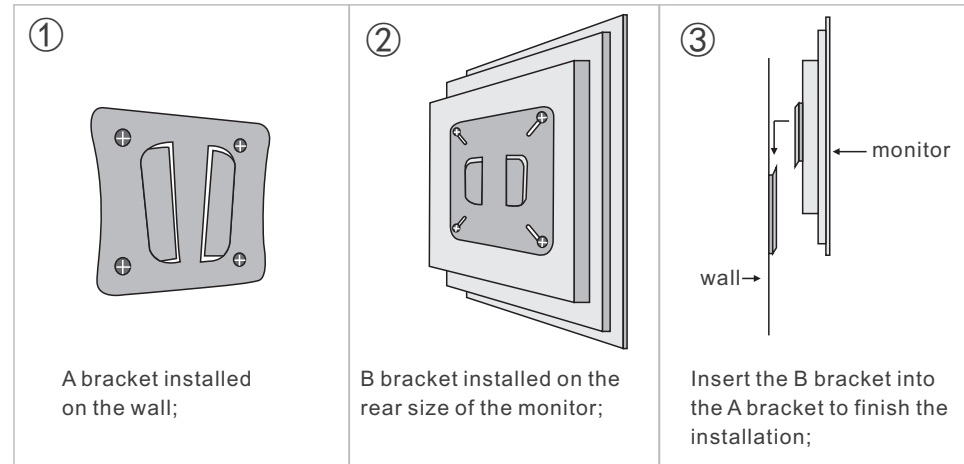
Notices :

1. Please do not place the monitor besides the radiator or heat source.
2. Please do not let any objects press or twine around the power cable or VGA cable.
3. Please do not place the monitor near to water source or humid places.
4. Please do not block off the back vents which can dissipate heat generated inside it to prevent damage of components.

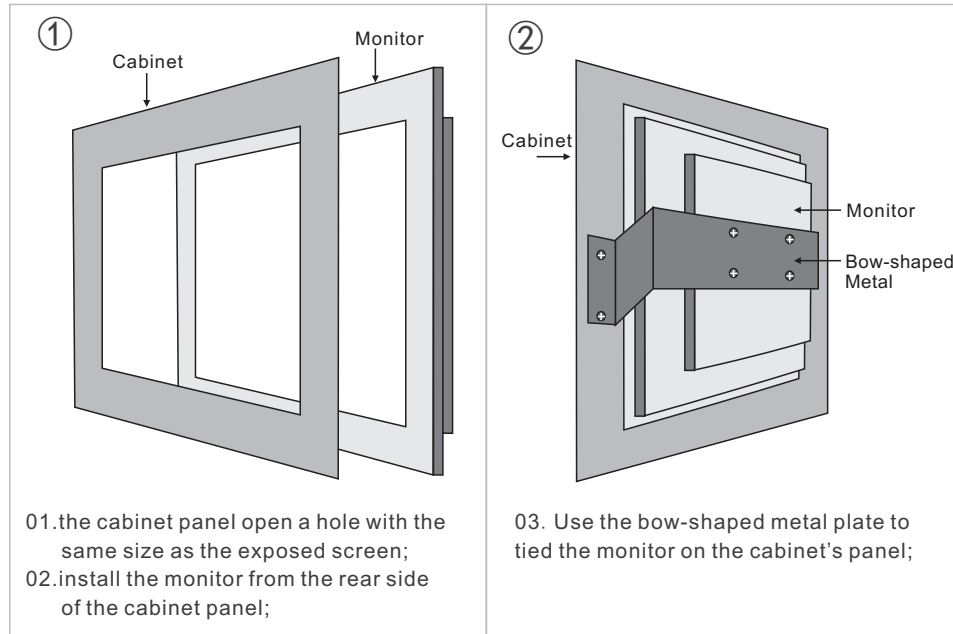
Embedded with snap joint Installation: The monitor with four snap joints buckle hole need install, follow the below steps:



Wall-mount Installation: A, B brackets, Insert the B bracket into the A bracket to finish the installation;



Embedded Installation: If only need the monitor's screen exposed.



7 Maintenance

01. Continuous working for long time will lead to transistor aging or burnout,so please shut down the monitor when not using it or reducing the lightness of screen.
02. Do not keep the monitor in shut down station for a long time(more than 72 continous hours), this will help to increase the working time of monitor.
03. Please do not put the monitor in a room which humidity is higher than 80%,because it is easy to cause electric leakage of power transformer and other coils after becoming damp. Components inside are also easy to get rust which will lead to circuit board short-circuiting
04. When the monitor do not work for a long time, you can power on and let it work for a moment, in order to using the generated heat to drive off the humidity inside.
05. Please do not let the humid objects enter into monitor, when find there is vapour on the screen, please wipe it off by soft fabric , and then turn on the power.
06. If humidity has entered into the monitor, place the monitor at a warm place, so that water and organics inside can be evaporated. If the humid monitor is turn on, it will lead to LED electrode corrosion which will cause permanent damage.
07. If stains on the surface of the monitor, you can use the soft fabric with little water to wipe them off lightly after making sure you have shut down the monitor, please do not spray water onto screen or crate.

08. If simply wipe can't make it clean, please pour little no wear soft cleaner without alcohol and ammonia in it onto the clean, soft and non cottony fabric to wipe the surface.
- 09.The hardness of the screen is generally under 3H (hardness of pencil lead),so please avoid any strong impacting shaking or pressing to the monitor
10. Disassemble the monitor by yourself is prohibited.Even though the working voltage of LED backlight compared with traditional CCFL has decreased a lot which generally under 20V, the high inside transient voltage still has much danger. In addition it can increase the breakdown rate of monitor.
11. Please stop from using the screen saver when you don't use the monitor.The varicolored and sportive screen saver keep the monitor stay in the station of repeating startup and shutdown, it will reduce the working time of monitor.

8 Common Troubleshooting of Touch Screen

※ Please check as the following when the touch screen has no response.

- 1.Maybe the USB cable connection is loose, please check it.
- 2.Maybe the driver is not installed. Please reinstall it .
- 3.Maybe the driver is not compatible. Please install the correct one.

※ Please check as the following when the response time is too long.

- 1.The CPU is occupied by programs or too much process, please close the unnecessary program or use the task manager to end them.
- 2.There have sundries on the surface of touch screen, please clear it.

※ Please check as the following if the touch screens orientation inaccurate.

1. Touch screen after being used for a long time, the inside gas will leak, result in the change of their own environment, which need to calibrate the screen again.
2. There have sundries on the surface of touch screen, please clear it.

※ If the touch screen orientation is inaccurate, please according to the following operations. Touch screen adopts Taiwan master control chip, cooperate with eGalaxTouch software to operate settings.Long press the right button of screen for 3 seconds.

Adjust the long press time, close the buzzer sound, all settings can be set by eGalaxTouch.

Solutions: open the locating software to orientation, double click the eGalaxTouch software(as shown in picture) can set four- point location(General situation can check accurately),nine-point location or twenty five-point location(For parts drift, four edges can locating accurately but the middle cannot).

