

SK1-300 Series

Reliable, High Performance Kiosk Printers

The SK1-300 Series of 3-inch kiosk printers have it all: they boast a print speed of 250mm/sec with 203 dpi resolution, while also demonstrating high reliability, compact design, and easy integration.

Available in standard format (horizontal orientation) with or without presenter, standard format drop-in paper loading with or without presenter, or vertical format (vertical orientation) without presenter, the SK1-300 Series of kiosk printers have the ability to fit many applications.

Featuring a compact (low height size: 95mm including paper roll) and lightweight (730g) design, the SK1-321 kiosk printer is an optimal solution for applications requiring a small direct thermal kiosk printer with standard 3-inch print width. The SK1-321 also features a drop-in and print paper basket design, compared to the SK1-311, which features a paper roll arm holder.

All SK1-300 models come with RS-232C and USB interface which integrates with many commonly used kiosk solutions. The SK1-300 Series also ships standard with StarPRNT emulation, allowing software developers to take advantage of the full stack of Star Micronics technology, such as the StarPRNT SDKs and Star's powerful line of drivers. Software

developers that have already integrated Star products can now easily swap or extend their applications from a desktop printer to a kiosk printer. ESC/POS is still available for legacy integration.

Features:

- High-Speed Printing: 250mm/sec
- Adaptable, Modular Design
- StarPRNT Emulation for Easy Integration
- Available with and without Presenter
- Auto Loading Paper

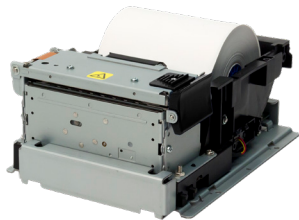
Available Options:

- Standard Bezel
- LED Bezel
- Anti-Jam Bezel
- Standard Presenter
- LED Presenter
- Large Paper Roll Holder (Standard Position / Upper Position / Beneath Position)



SK1-300 Series

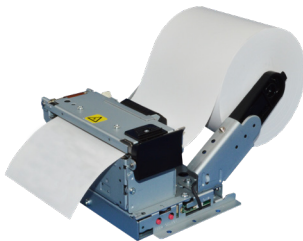
SK1-321SF4-Q-SP



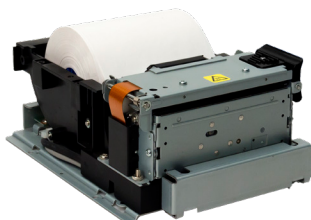
SK1-311SF4-LQP SP



SK1-311SF4-Q-SP



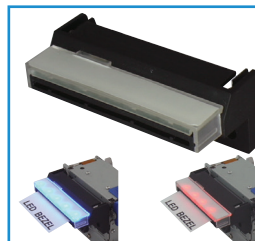
SK1-321SF4-Q-SP



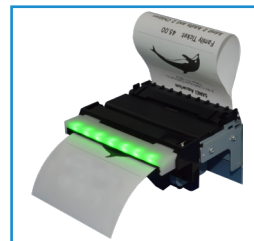
Specifications SK1-300

Printer Method	Direct Line Thermal
Print Speed	Max 250mm/sec
Paper Width	58mm, 60mm, 80mm, 83mm
Print Width	54mm, 56mm, 72mm, 80mm
Paper Roll Holder	SK1-311: 120mm SK1-321: 83mm
Resolution	8 dots/mm (203dpi)
Font	8x16, 12x24 dots
Character Types	PC437 / 850 / 852 / 857 / 858 / 860 / 863 / 865 / 866, WPC 1252
Bar Code	JAN8/13, CODE39, ITF, CODABAR, CODE128, UPC-A/E
2D Bar Code	QR, Maxicode, Micro PDF-417, PDF-417, DataMatrix
Interface	Dual Serial (RS232C) & USB (V2.0 FULL SPEED)
Cutter	Full and Partial Cut (Command Selectable)
Operating Voltage	DC 24V
External Dimensions	SK1-311: 127 x 137 x 79 (w x h x d) mm SK1-321: 127 x 137 x 75 (w x h x d) mm
Reliability	Max Cycles Before Failure -200 Million Pulses Print Head -150km Auto Cutter -2 Million Cuts

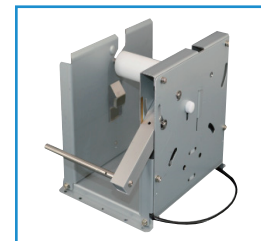
Model	Description	Part Numbers
SK1-311SF4-LQP-SP	SK1, Kiosk 3", Presenter, USB/Serial, Ext PS needed	37963774
SK1-311SF4-Q-SP	SK1, Kiosk 3", USB/Serial, Ext PS needed	37963782
SK1-V311SF4-LQP-SP	SK1, Kiosk Vertical 3", USB/Serial, Presenter, Ext PS needed	37964602
SK1-V311SF4-Q-SP	SK1, Kiosk 3", USB/Serial, Ext PS needed	37964092
SK1-321SF4-Q-SP	SK1, Kiosk 3", USB/Serial, Ext PS needed	37963462



Bezel



Presenter



Large Paper Holder